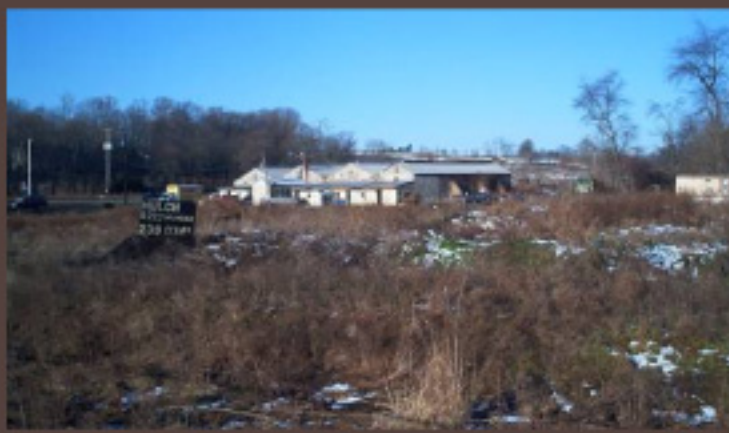
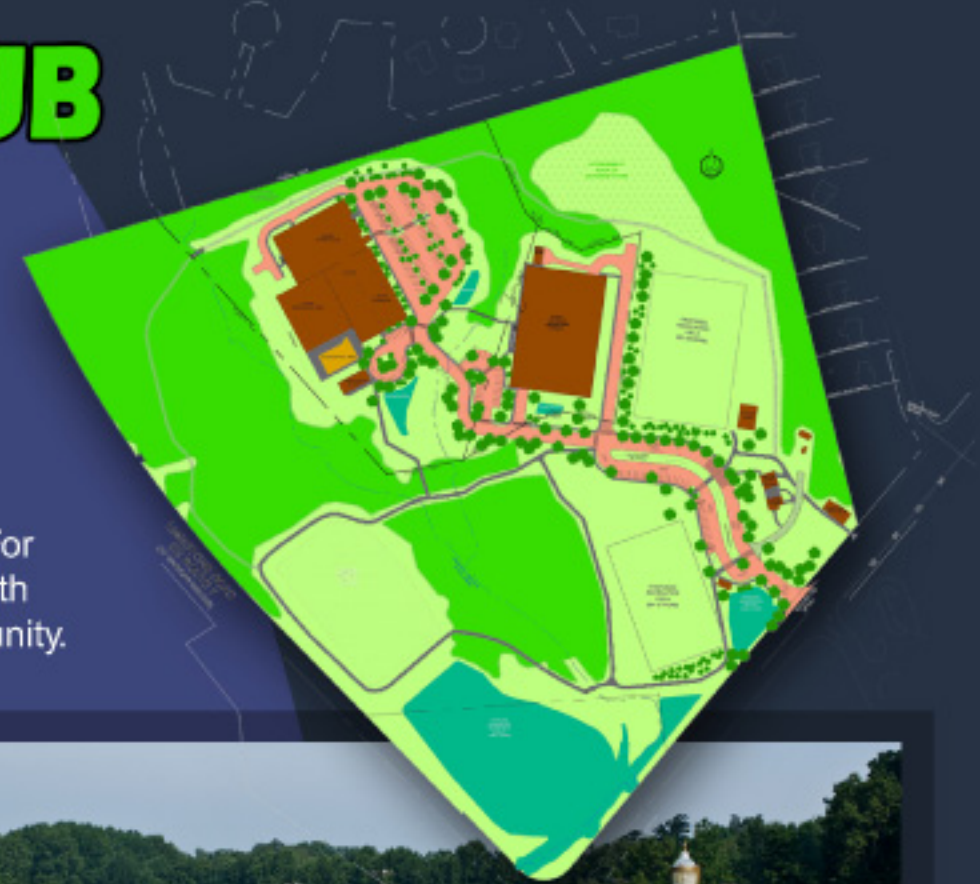


HOCKESSIN ATHLETIC CLUB

MUSHROOMS TO MUSCLES

The Pike Creek Fitness Club needed a site for a new state-of-the-art family fitness center. Duffield Associates identified an underutilized mushroom agricultural/industrial site that met the Club's need. The site was surrounded by the proposed Tweed's Park and regional stormwater facility being developed for the Delaware Department of Transportation by Duffield Associates. The Club and the Park were a natural fit and the Hockessin Athletic Club became New Castle County's first major brownfields redevelopment/rezoning project. For this public/private partnership, Duffield's engineers utilized green technology and smart growth principles to be good environmental stewards and good neighbors to the surrounding community.



AFTER



BEFORE